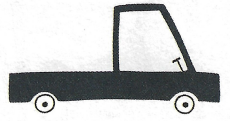
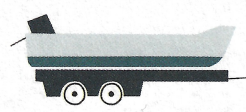


Increased Parking Access Along Bjune and Brien in Winslow



City Council approved changes to parking along Bjune Drive, increasing access for all users while maintaining some spaces for boats and trailers. From April to September, 26 additional parking spaces will be available on weekends and holidays, with trailer parking reduced to 10 spots. From October to March, 42 spaces will open as trailer restrictions are lifted entirely. The five spaces near the City Dock remain reserved year-round for boat and trailer parking. Street parking is still available on a first-come, first-served basis to boats and trailers where designated. These changes were made possible through an amendment to a 1986 grant agreement with the Recreation and Conservation Office as the exclusive boat and trailer parking had been underutilized for years. Bjune and Brien parking limits have also increased from 2 to 3 hours.

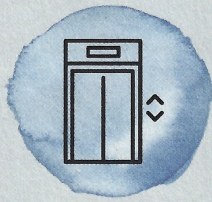


Development of New Senior/Community Center Continues

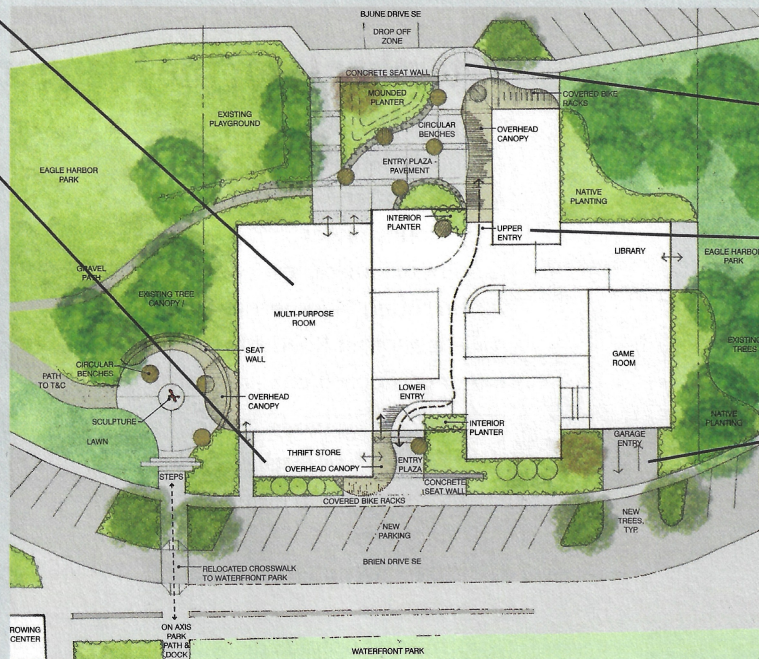
The City Council unanimously approved at their September 24 Regular Business Meeting the 30% conceptual design plan for redeveloping and expanding the current Bainbridge Island Senior/Community Center (BISCC). This approval followed a presentation by BISCC Director Reed Price and architect Charlie Wenzlau. The City owns the land and building that the Senior Center manages. The proposed redesign will replace the existing facility, increasing it from 6,200 to 17,000 square feet, by making some important changes:

Expanding meeting spaces including by adding a Multipurpose Hall that can accommodate 200 people.

Increasing outdoor seating areas including a rooftop terrace.



Providing an elevator for access to the different levels.



Expanding the existing building footprint by extending northward toward Bjune.

Moving the main entrance to Bjune to orient the facility toward the downtown area and make accessibility from downtown easier.

The new facility will have two floors and will increase parking by 30 spots in the area by adding parking on the lower level.

During the design process the development team is consulting with City Emergency Management Coordinator Anne LeSage and with Bainbridge Prepares on how to improve the space, which is one of the Island's disaster hubs, for emergencies. BISCC has received a grant from Seattle/King County to ensure the new facility will also serve as a resilience hub at all times, including during recovery from disaster. In addition, they are considering including a shower for use during emergencies and limited laundry facilities. Price stressed that the facility is both a senior and community center.

On May 14, the City Council approved a Memorandum of Understanding (MOU) with BISCC for the development of the new facility. The terms of the MOU require BISCC to have periodic check-ins with the Council at 30%, 60% and 90% design completion. The 30% check-in happened in September. The MOU also requires the conceptual plans to accommodate a future affordable housing project as well as a playground of comparable size and functionality as the playground now at Waterfront Park.

Currently, BISCC is engaged in the design review stage, hoping to complete that by the end of the year. In addition, they will

➔ Start reaching out to major donors in 2025.

➔ Prepare a public campaign to launch in 2026.

➔ Meet with stakeholders to discuss needs and accessibility issues.

The construction is anticipated to begin in 2027. Price says, "While it's an investment that will require all of us participating to achieve, the benefit of a flexible community space will yield returns far into the future for the Island's human services network."